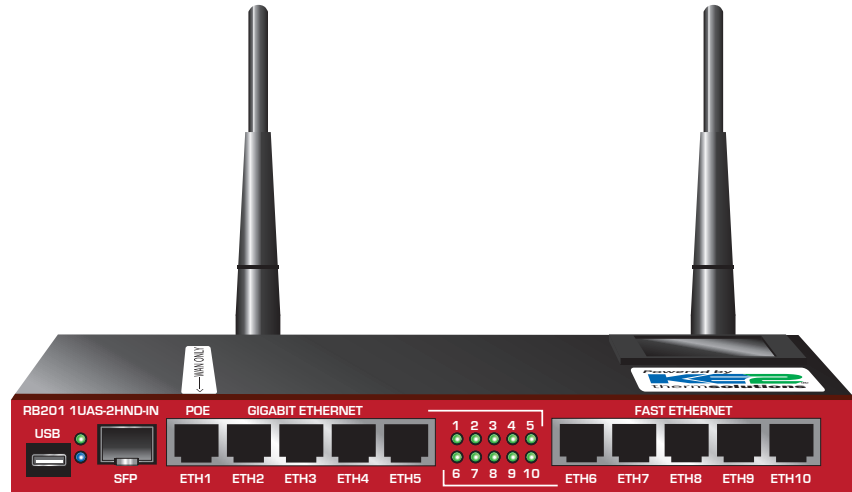




KE2 SmartGate

Features and Benefits



(pn 20695)



Introduction

The KE2 SmartGate is the heart of the Refrigeration Network. It provides the KE2 Evaporator Efficiency controller with the ability to communicate easily and immediately both locally and remotely.

Although KE2 Therm does not require special equipment for communication with our devices, many users have requested a pre-configured solution to simplify the creation of the Refrigeration Network. Using feedback from many field installations, KE2 Therm’s engineers have created the KE2 SmartGate.

The KE2 SmartGate natively provides the user with a powerful tool designed to simplify any installation from a basic single controller to the most advanced multi-controller setup. The on-board set of tools are fully supported by KE2 Therm’s Technical Support team to make the installation even smoother.

Locally it provides wired or wireless access to the controllers without special configurations of the user’s PC.

Main Features & Benefits

- Pre-configured - eliminates the need to configure the network
- Industrial grade - increased speed and durability
- Provides 9 Lan ports - reduces the need for a switch
- Not an IT guy...Not a problem!

General Features	
Commercial Grade	YES
LAN Ports	9
Gigabit Support	YES
Serial Console	YES
POE (Power Over Ethernet)	YES
Shielded Ports	YES
Fiber	YES
Supports KE2 - EZVPN	YES
Wired and Wireless Models	YES
Supports > 20 Devices	YES
Enterprise Ready	YES
Temp Range	-30°F(-35°C) to 150°F (+65°C)
Humidity Range	Max. 90% (non-condensing)

Specifications		
CPU	600MHz	
Memory	128MB	
Ethernet	Gigabit Ports	5
	10/100 Ports	5
Wireless	802.11 B/G/N	
Expansion	Fixed Gigabit Ethernet SFP cage	
USB	MicroUSB (powered)	
POE	ETH1 (8 - 28v DC)	
Antenna Gain	4dbi	
TX Power	30dBmDH	

Additional Features	
Supports single mode and multi mode	
CP Server and Client	
VPN Server and Client	
IPv4 and IPv6	
Reset Button	
Reset Jumper	
RJ45 Serial Port	
LCD Panel	
Temperature Sensor	
Voltage Sensor	



KE2 SmartGate Features and Benefits

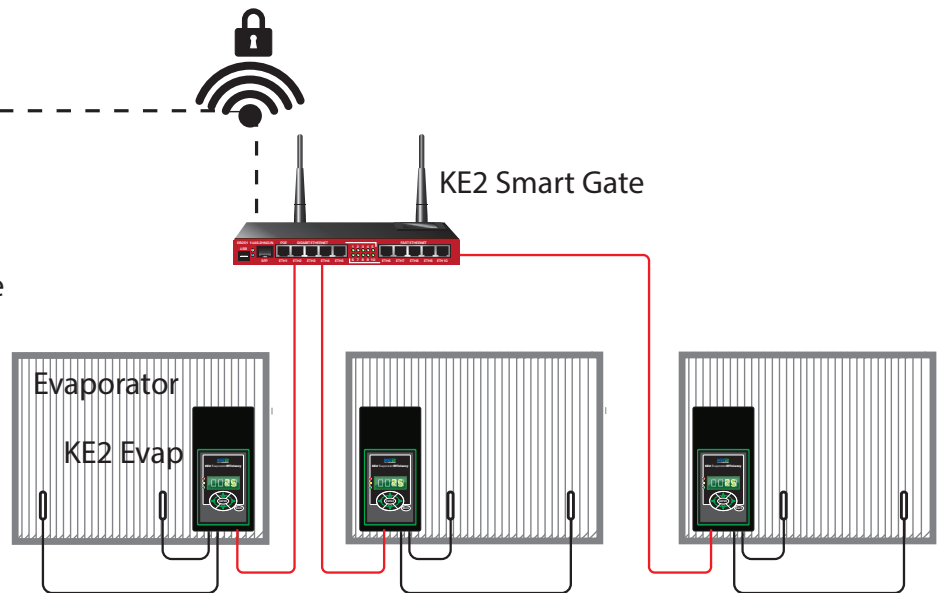
Setup Options

The KE2 SmartGate can be configured a number of ways.
Configuration options are shown below:

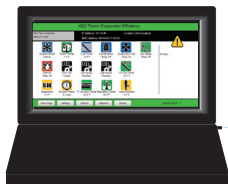
Local Secured Access



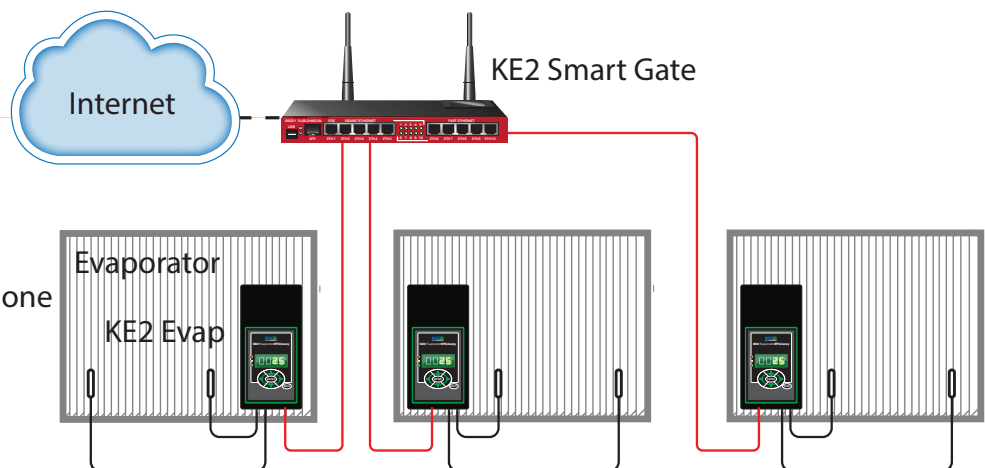
PC / Laptop
iPhone / iPad
android tablet / phone



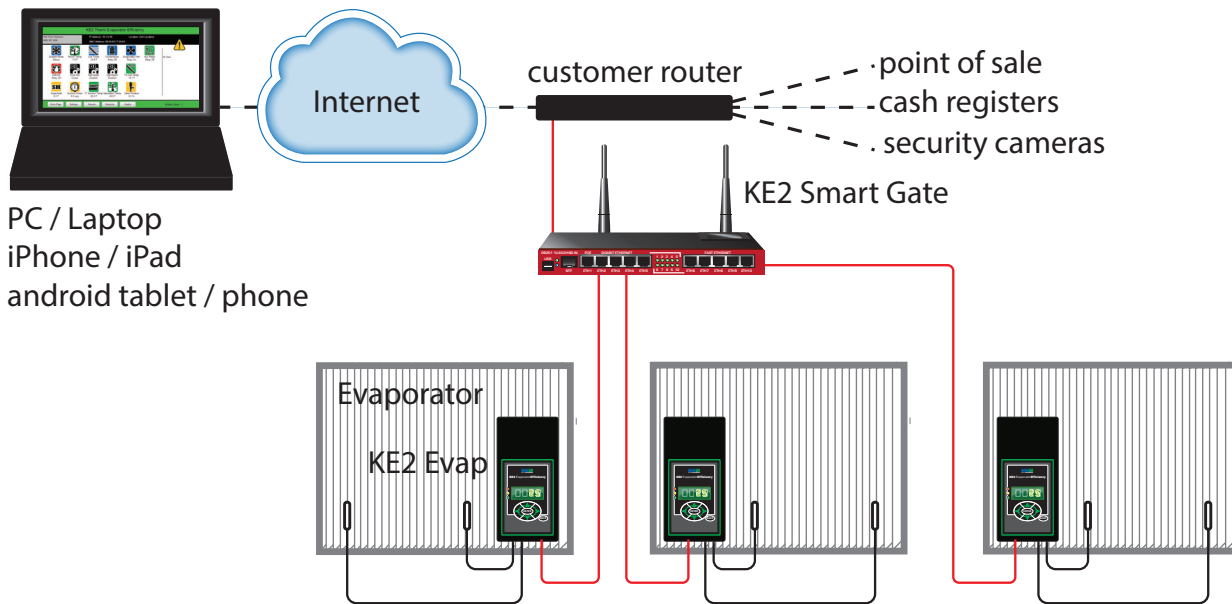
Dedicated Internet



PC / Laptop
iPhone / iPad
android tablet / phone



Existing Network



Existing Network Pre-work

There are a few preliminary steps necessary when connecting the KE2 SmartGate through another (customer's existing) router.

The Network Administrator / IT support person will need to provide **Port Forward for 3rd party**.

Tell the Network Administrator / IT support person:

"We want to do an L2TP Tunnel to our WAN Interface. I need the following ports open:

UDP-1701

UDP-500

UDP-4500

GRE-50 (ipsec-esp)

TCP-8291 (management of KE2 SmartGate)"

This step must be completed for each router if multiple routers are between the KE2 SmartGate and the Internet.

Once this step is completed you are ready to begin the setup of the KE2 SmartGate. Reference literature Q.5.24 KE2 SmartGate Installation and Setup, and Q.5.24 KE2 SmartGate VPN Configuration