



KE2
thermsolutions®

KE2 Temp + Air Defrost (pn 20611)
For **Medium Temperature** Applications with **Air Defrost**
Condensed Quick Start Guide

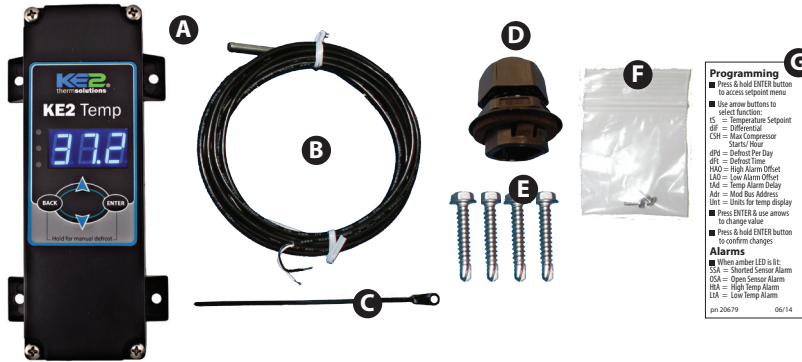
Q.3.65
June 2019



Complete Instructions

Please visit: <http://ke2therm.com/product/ke2-temp-defrost/>
and click the **Link to Literature** button

— OR — use this QR code.
KE2 Temp Literature



What's in the Kit

The following parts are included:

- A** (1) KE2 Temp + Air Defrost controller
- B** (1) temperature sensor - 45"
- C** (1) sensor ziptie
- D** (1) liquid tight cord grip
- E** (4) self-tapping mounting screws
- F** (2) screws for high voltage shield
- G** (1) programming sticker

Programming

- Press & hold ENTER button to access setpoint menu
- Use arrow buttons to select function
- tS = Temperature Setpoint
- dIF = Differential
- CSH = Max Compressor Starts/Hr
- dPd = Defrost Per Day
- dFt = Defrost Time
- HAO = High Alarm Offset
- LAO = Low Alarm Offset
- tAd = Temp Alarm Delay
- Adr = Mod Bus Address
- Unt = Units for temp display
- Press ENTER & use arrows to change value
- Press & hold ENTER button to confirm changes

Alarms

- When amber LED is lit:
- SSA = Shorted Sensor Alarm
- OSA = Open Sensor Alarm
- HtA = High Temp Alarm
- LtA = Low Temp Alarm

pn 20619 06/14

Supplies List

The accessories required for the controller to work are supplied. However, some truck stock items may be needed. See the following list.

- conduit to go between the controller & evaporator
- (2) conduit connectors (straight or elbow as required)
- (4) high voltage wires (matched to the load of the liquid line solenoid/compressor and the controller.)

- wire labeling (numbers, colors, etc.)
- additional wire ties
- 18 gauge twisted shielded pair (if extending sensor wires)
- Cat5e wire (if adding communication)
- foam insulation (if running wires outside the space)
- silicone (for sealing any box penetrations)

Controller Navigation

- Indicator Lights:**
- Red blinking - Real Time Clock battery needs to be replaced
 - Yellow light - non-critical alarm (system running)
 - Green light - compressor on
 - Green blinking - compressor waiting on timer to start/stop

- Access Setpoint mode by pressing and holding the **ENTER** button until tS (temperature setpoint) displays on the screen
- Use the **▲** up and **▼** down arrows to scroll through available setpoints.
- Press **ENTER** to view the current setting.
- Use the **▲** up and **▼** to change the setpoint
Press **ENTER** to move between the digits to accelerate the changes.
- Press **ENTER** and hold to confirm each setpoint change
- Press **BACK** to escape.

Setpoints

- ▲ **tS** = Temperature Setpoint
 - ▲ **dIF** = Differential
 - ▲ **CSH** = Maximum Compressor Starts/Hour
 - ▲ **dPd** = Defrost Per Day
 - ▲ **dFt** = Defrost Time
 - ▲ **HAO** = High Alarm Offset
 - ▲ **LAO** = Low Alarm Offset
 - ▲ **tAd** = Temp Alarm Delay
 - ▲ **Adr** = Mod Bus Address
 - ▲ **Unt** = Units for temp display (FAH or CEL)
- Only visible if CUS (custom) is selected for dPd (Defrost per day)
- ▲ tOd
 - d1
 - d2
 - d3
 - d4
 - d5
 - d6
 - d7
 - d8
 - d9
 - d10
 - d11
 - d12

Alarms - When amber LED is lit:

- SSA = Shorted Sensor Alarm
- OSA = Open Sensor Alarm
- HtA = High Temp Alarm
- LtA = Low Temp Alarm

Basic Setpoints

Setpoint	Description	Minimum	Default	Maximum
tS	Temperature Setpoint	-50°F (-45°C)	35°F	100°F (38°C)
dIF	Differential	1°F (1K)	2°F	30°F (17K)
CSH	Max. Comp. Starts/Hr.	5 (Off)*	6	10
dPd	Defrost Per Day	0	6	12, CUS**
dFt	Defrost Time	0 min	15 min	720 min
HAO	High Alarm Offset	1°F (1K)	5°F	10°F (6K)
LAO	Low Alarm Offset	1°F (1K)	3°F	10°F (6K)
tAd	Temp Alarm Delay	1 min	90 min	180 min
Adr	Mod Bus Address	1	1	247
Unt	Units for temp display	FAH	FAH	CEL

*Selecting fewer than 5 compressor starts per hour results in the starts per hour feature being turned off. The compressor will then function on temperature only.

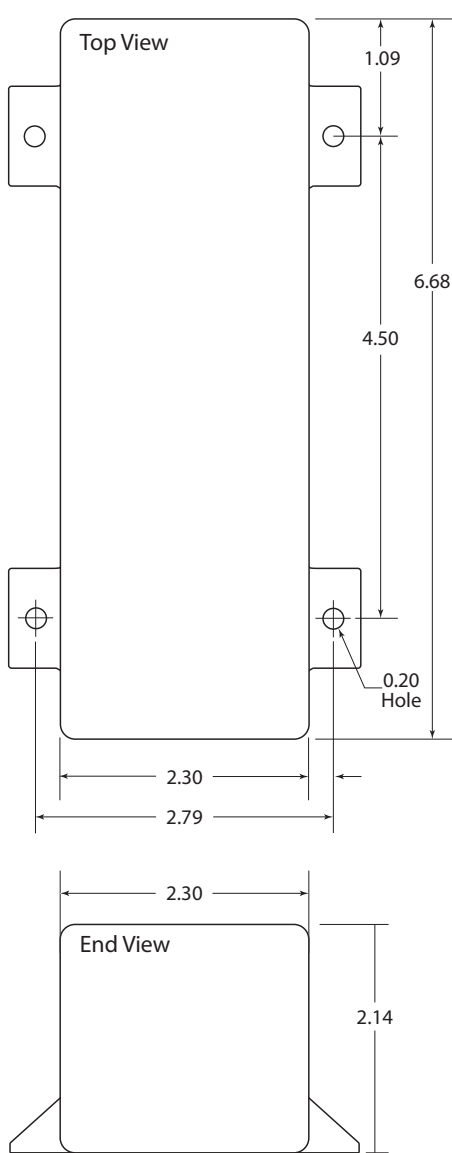
** Selecting CUS (custom) unlocks additional Setpoints. See Advanced Setpoints table.

For a complete list of setpoints and descriptions see Q.3.20.

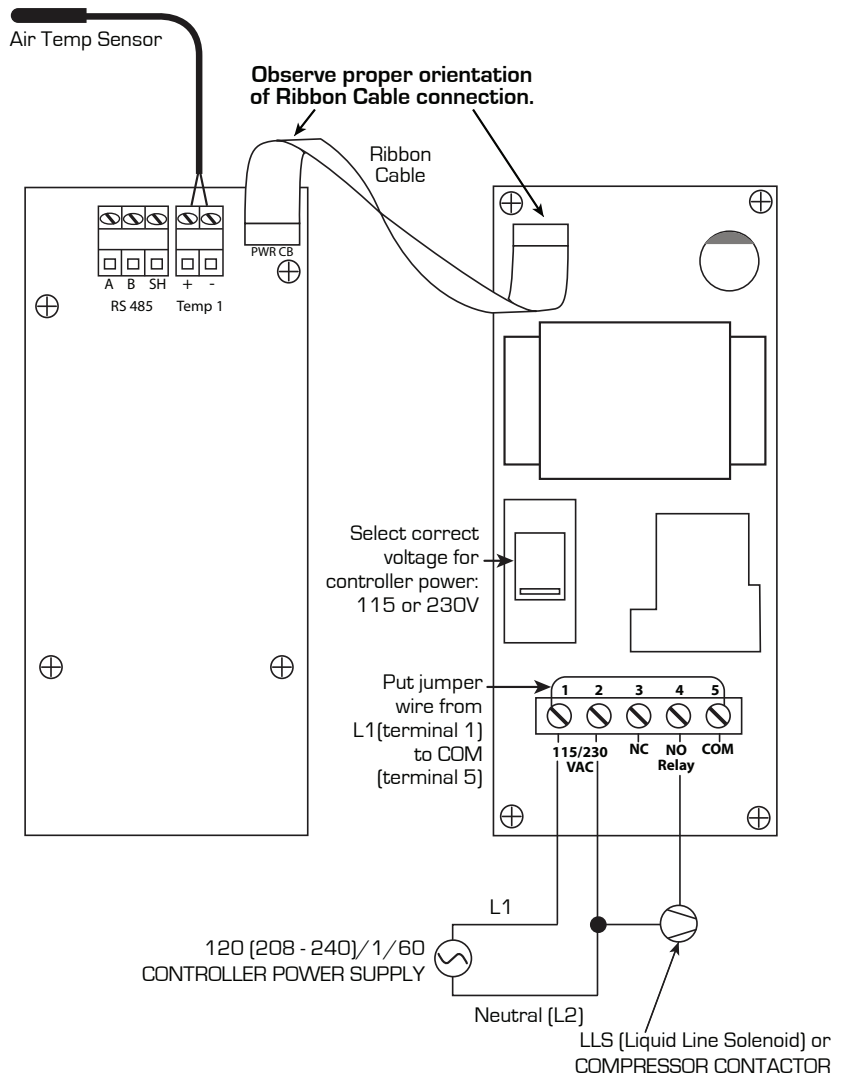


KE2 Temp + Air Defrost (pn 20611)
For **Medium Temperature** Applications with **Air Defrost**
Condensed Quick Start Guide

Dimensions - Inches



Wiring Diagram



Alternate Wiring Method

